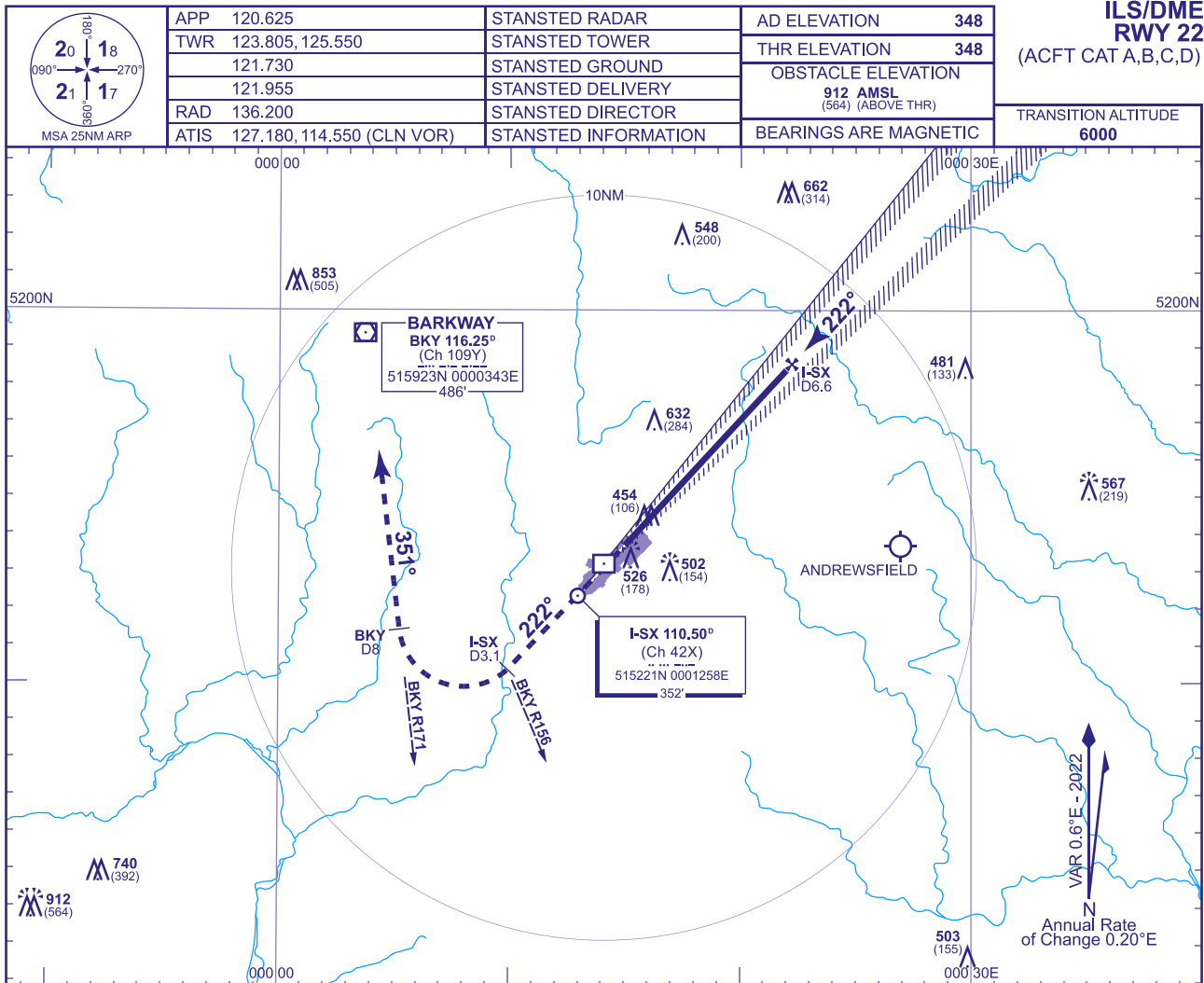
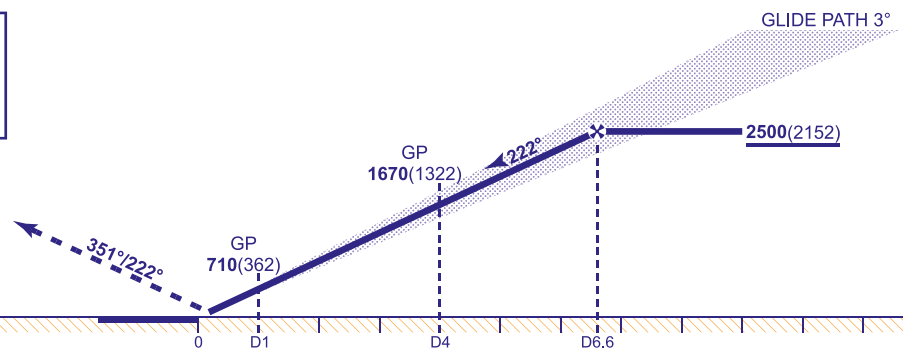


348	LONDON STANSTED ILS/DME RWY 22 (ACFT CAT A,B,C,D)
348	



RECOMMENDED PROFILE GLIDE PATH 3°, 320FT/NM						
DME I-SX	6	5	4	3	2	1
ALT(HGT)	2310(1962)	1990(1642)	1670(1322)	1350(1002)	1030(682)	710(362)

Climb straight ahead **not above 3000**.
At **I-SX DME 3.1 (VOR BKY R156)** turn
right to establish on **VOR BKY R171**
(QDM 351°) by **BKY DME 8** continuing
climb as necessary to **BKY VOR** at
3000 or as directed.



Aircraft Category		A	B	C	D	Rate of descent	G/S KT	160	140	120	100	80
OCA (OCH)	CAT I	498(150)	508(160)	520(172)	533(185)		FT/MIN	850	740	640	530	420
	CAT II	409(61)	420(72)	433(85)	447(99)							
VM(C)OCA (OCH AAL)	Total Area	900(552)	900(552)	1030(682)	1040(692)							

AIRCRAFT UNABLE TO RECEIVE DME T-3X
Advise ATC. A radar range will be provided at 4NM inbound.

AIRCRAFT UNABLE TO RECEIVE VOR DME BKT
Advise ATC. Radar direction will be passed for missed approach procedure.

NOTE 1 For initial approaches see AD 2-EGSS-7-17.
2 MAX 185KIAS for MAP until established on BKY R171.

AD 2-EGSS-8-5